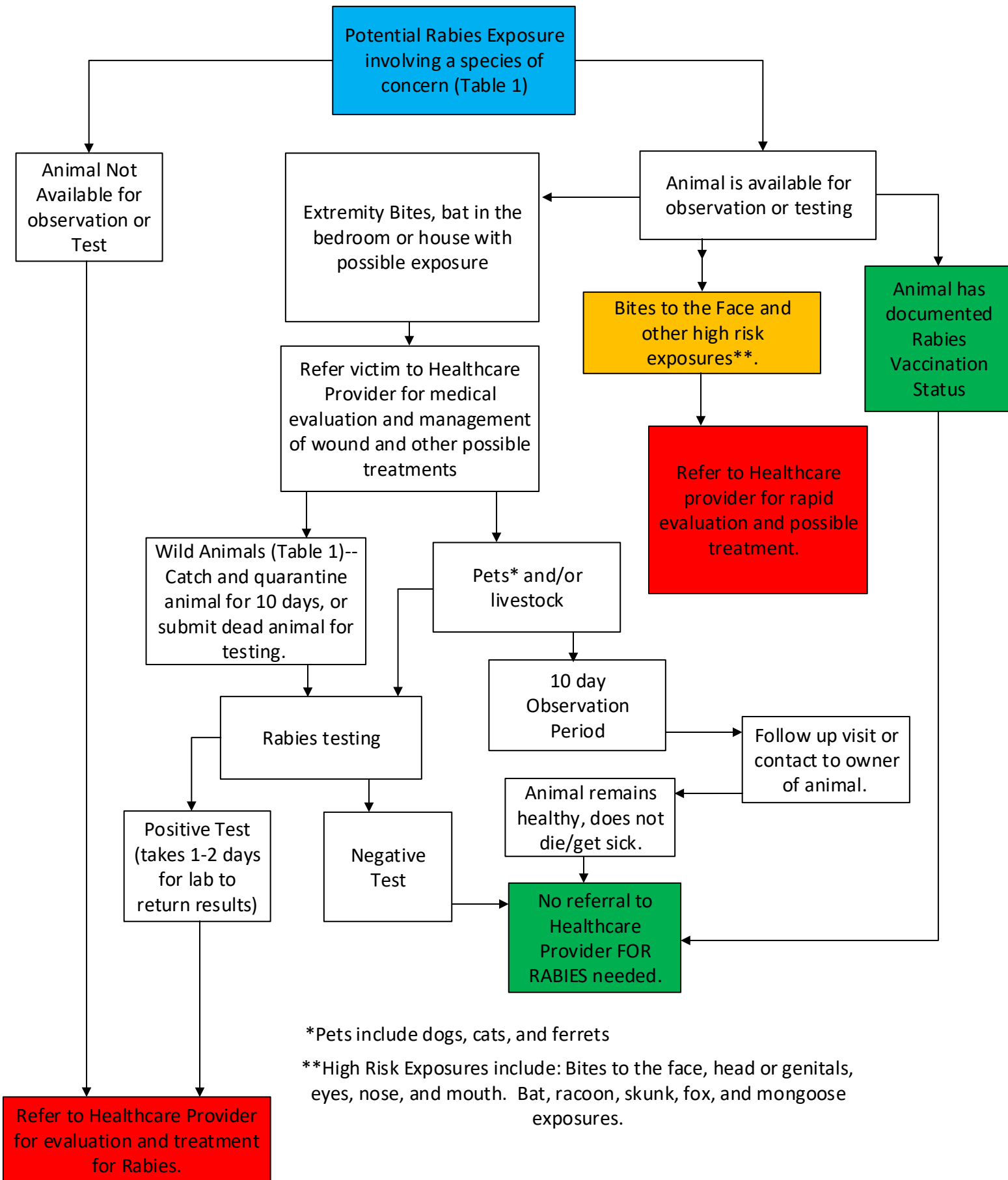


Animal Bites and Rabies Risk: Guidance for Law Enforcement



*Pets include dogs, cats, and ferrets

**High Risk Exposures include: Bites to the face, head or genitals, eyes, nose, and mouth. Bat, racoon, skunk, fox, and mongoose exposures.

Table 1: Human Rabies Risk Evaluation: Species of the Biting Animal

Species of Concern		
Domestic Animals	Cat Dog Ferret Alpaca Cow Donkey	Goat Horse Llama Mule Pig Sheep
Wild Animals, Captive Wild or Hybrid Animals Please consult with MDH about bites from these wild animals. 24/7 consultation is available to health care providers and veterinarians at: 651-201-5414	Badger Bat Bear Beaver Bison Bobcat Coyote Deer Elk Ermine Fisher Fox Lynx Marten Mink	Monkey Moose Mountain lion Muskrat Opossum Otter Porcupine Puma/Cougar Raccoon Skunk Weasel Wolf Wolf/dog hybrid Wolverine Woodchuck
Bites From These Species are Not a Rabies Concern in Minnesota*		
All amphibians All birds All reptiles Chipmunk Gerbil	Gopher Guinea pig Hamster Hare Hedgehog Mole	Mouse Rabbit Rat Shrew Squirrel Vole

* MDH strongly discourages testing small rodents or rabbits for rabies, but unique situations do occur in which testing may be justified. Please do not submit these species without first consulting with MDH at 651-201-5414.